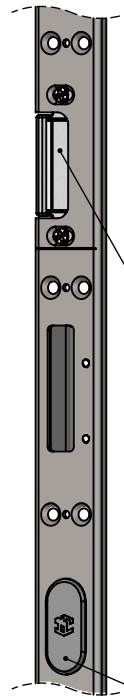
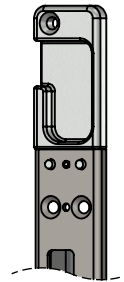
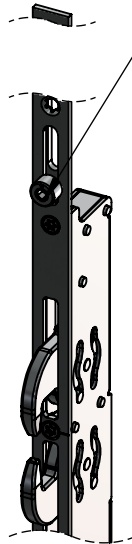
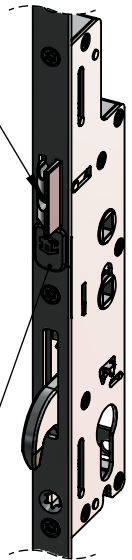


Ingenious Multi-Point Door Lock Adjustment Details

All roller cams are adjustable for tightening and loosening compression. The cams can be adjusted by +/- 2mm using a 4mm Allen key.



The Lock Latch can be easily reversed by removing Csk Screw with a standard Cross Head Screwdriver, spinning the latch through 180 degrees & re-tightening screw. This procedure should be carried out using hand tools.



Keep Latch is adjustable by +/- 2.5mm. This can be achieved by slackening off the two latch screws using a standard Cross head screwdriver, moving the latch to the desired position, & then re-tighten the two screws.

All ILH Locks come with a latch hold back feature. This is to avoid accidental lock out when used for Lever / Pad option. Simply depress the latch & slide the Black component upwards.

Various ILH 1 Piece Keeps are fitted with fixing hole cover caps if concealed frame fixing is required.

M.P.L.

Keep